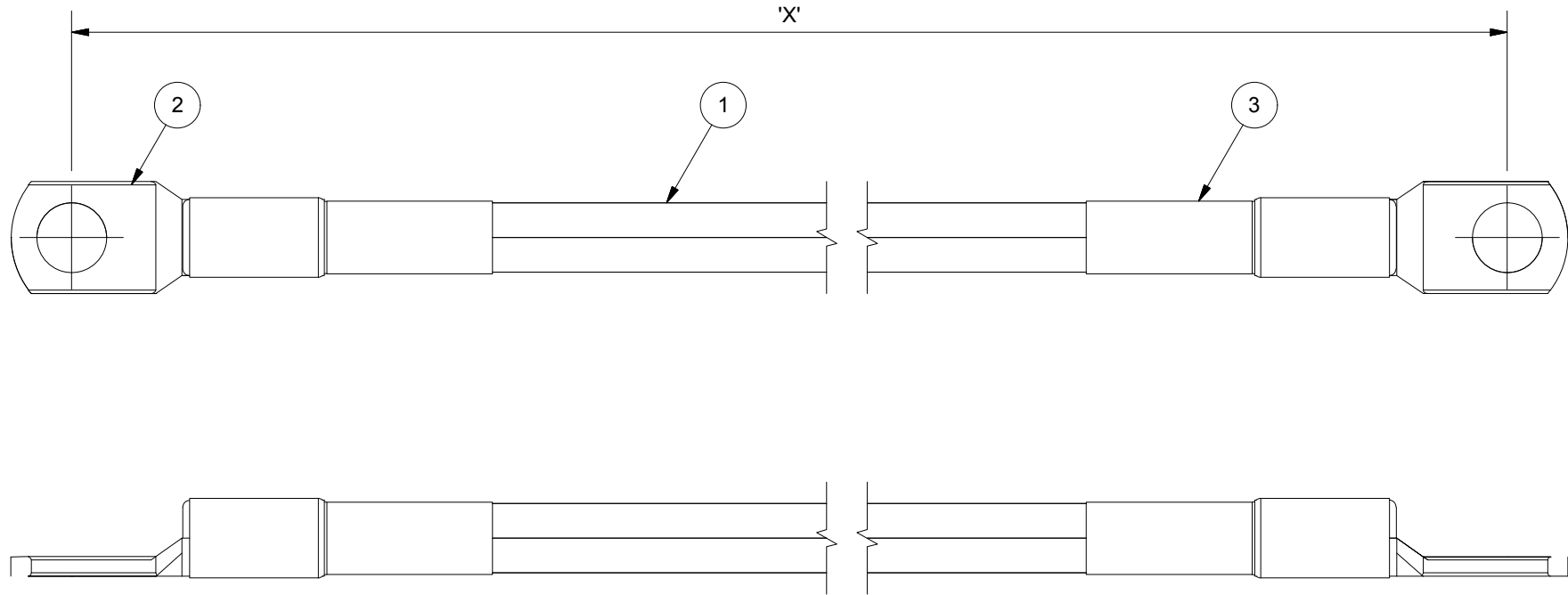


ITEM	QTY	DESCRIPTION	MATERIAL
1	1	CABLE, GREEN/YELLOW INSL	COPPER, STRANDED
2	2	CRIMP LUG, M10 (CRIMPED)	COPPER, TINNED
3	2	HEATSHRINK	PVC
4	2	BOLT, M10 x 20mm (NOT SHOWN)	S/S 316
5	2	NUT, HEX, M10 (NOT SHOWN)	S/S 316



ORDERING CODE: ESxxx-yy

XXX = EARTH STRAP LENGTH IN MILLIMETRES

YY = CABLE CROSS SECTION IN mm<sup>2</sup>

eg: ES420-35

**LPI**<sup>®</sup>  
WWW.LPI.COM.AU

TOLERANCES  
UNLESS OTHERWISE STATED  
X. ± 1.0  
X.X ± 0.5  
X.XX ± 0.25

LIGHTNING PROTECTION INTERNATIONAL PTY. LTD.  
A.B.N. 11 099 190 897  
49 PATRIARCH DRIVE  
HUNTINGFIELD TAS 7055, AUSTRALIA  
PH: +61 3 6227 1955 FX: +61 3 6229 1900  
© 2014 LIGHTNING PROTECTION INTERNATIONAL PTY. LTD.

TITLE: EARTH STRAP - INCLUDING FASTENERS  
PRODUCT CODE LPI-ESTRAP REV 1  
SCALE 1:1 SHEET 1 OF 1 A4  
FILE ESXXX-YY.idw DATE 14/11/14