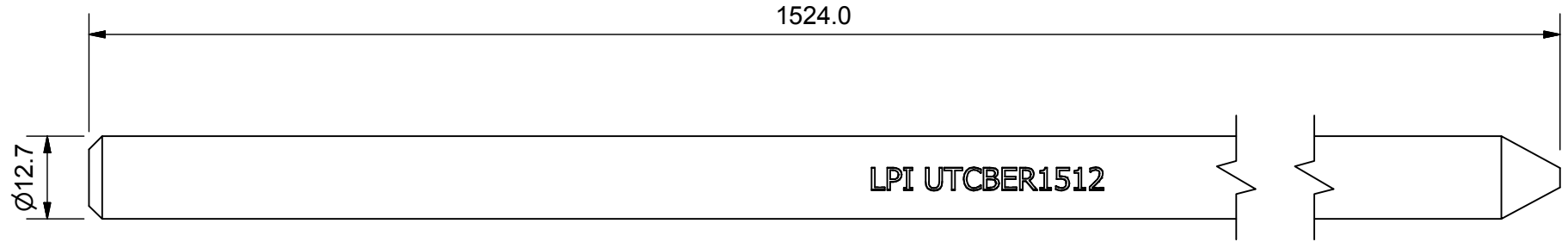
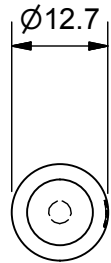



ITEM	QTY	DESCRIPTION	MATERIAL
1	1	LPI EARTH ROD 1.5 m x 12.7 mm	STEEL, COPPER BONDED



LPI[®]
WWW.LPI.COM.AU


TOLERANCES
UNLESS OTHERWISE STATED
X. ± 1.0
X.X ± 0.5
X.XX ± 0.25

LIGHTNING PROTECTION INTERNATIONAL PTY. LTD.
A.B.N. 11 099 190 897
49 PATRIARCH DRIVE
HUNTINGFIELD TAS 7055, AUSTRALIA
PH: +61 3 6227 1955 FX: +61 3 6229 1900
© 2015 LIGHTNING PROTECTION INTERNATIONAL PTY. LTD.

TITLE: LPI® UNTHREADED COPPER BONDED EARTH ROD 1.5 m x 12.7 mm		REV 2
PRODUCT CODE	UTCBER1512	
SCALE	NTS	SHEET 1 OF 1
FILE	UTCBER1512.E.idw	DATE 7/07/15